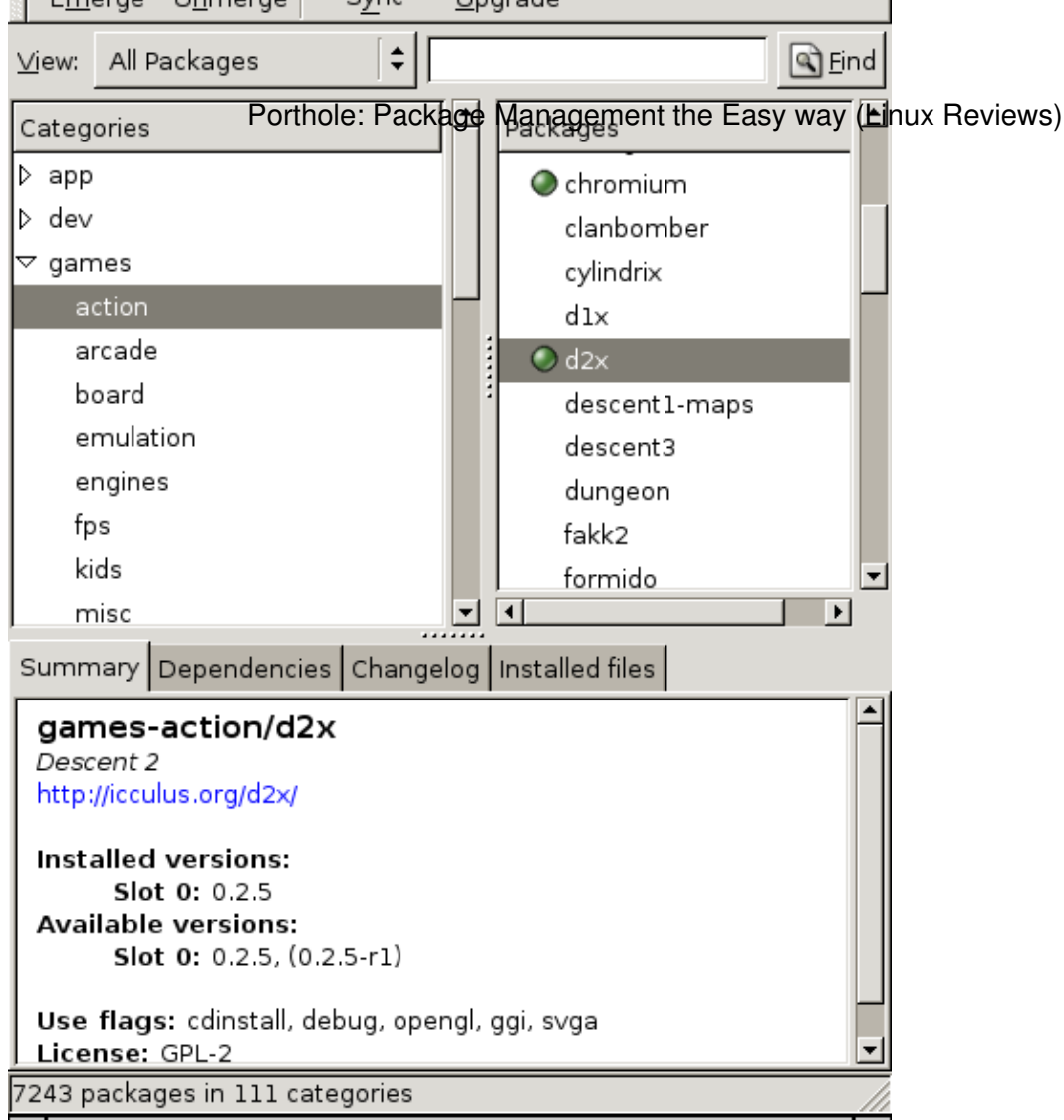


# Porthole: Package Management the Easy way

*Porthole: Package Management the Easy way v0.2 (en), xiando*

Porthole is a front-end for Portage, the Gentoo Package management system. It allows you to browse through available software packages and install them easy as pie.

Vidlinux Desktop OS is a popular Gentoo-based Desktop distribution. It's main attraction is Porthole, a GTK based front-end for portage. Gentoo users can also use this elegant tool.



Porthole is masked and must be installed with `ACCEPT_KEYWORDS="~x86" emerge porthole`. It must be run as root. If you started X as a normal user you can `xhost +localhost` to let root use the screen and start it with `su -c 'porthole'`.

You can emerge (install), upgrade and unmerge (remove) packages with a click when selected.

Porthole does not have advanced features like editing use flags, these must already be set correctly using ufed (manual) or by manually editing `/etc/make.conf`. Porthole is not a complete replacement for `emerge` and the rest of the command line utilities, but it does provide a clean interface for unexperienced. It makes the most basic functions accessible.

---

> [Linux Reviews](#) > [Gentoo Linux](#) >  
Porthole: Package Management the Easy way